

PACIFIC NORTHWEST RAILROAD ARCHIVE

NORTHWEST NEWS

This progress report is published to update the *Friends of PNRA* on the activities at the Archive during 2018-Q4.

Community Outreach

Over the past three years our Holiday Open House has been a great success. This year PNRA and the *Boeing Employees Model Railroad Club* held the open house at the Archive with 186 happy visitors from the South King County community attending over **Thanksgiving weekend, Nov. 23-25, 2018**. The Boeing club operated their big layout and ran their modular layout in the Main Work Room while PNRA volunteers conducted tours of the Archive and the collections.

Northwest Railway Museum (NWRM) acquired *Puget Sound Electric Railway* (PSER) interurban car 523 in September 2017. This fall PNRA provided images of PSER operations and information to support an exhibit detailing the history of PSER car 523 which will be restored at NWRM facilities in Snoqualmie using the proceeds from their recently awarded 2019-2021 Washington State Heritage Projects Grant.

Events on the PNRA calendar include:

- SP&SRHS Swap Meet, Vancouver, Wash. Feb. 16, 2019
- Monroe, Wash. Railroad Swap Meet, Feb. 23-24, 2019
- Milwaukee Road Spring Meet at PNRA, March 2, 2019
- GN-SP&S Seminar at PNRA, March 16, 2019
- PRRT&HS meetings at PNRA, March 30, 2019 & July 20, 2019.
- Santa Fe Spring Meet at PNRA, April 6, 2019.

The NPRHA provided Larry Sloan, president of the *Tacoma North Western Model Railroad Club* with the layout and elevation drawings for bridge 52.1 to help the club model the bridge for their layout.

HistoryLink.org was provided with the 1914 photo of workmen repairing the major landslide on the *Highland Park and Lake Burien Railroad*. The slide was on the hill from White Center down to Spokane Street and put the line out of service for many months.

Preservation Activities

Our new *Pacific Coast Railroad* (PCR) book was delivered from the printer the week before Christmas. The book was written by volunteer, Kurt Armbruster who chose 160 photos to go along with the text and maps to make the book a comprehensive history of Seattle's Own Railroad. Gorham Printing of Centralia, Wash. laid out the book and printed 500 copies which were funded by a 4Culture grant and pre-publication purchase of copies by the GNRHS Online Store as the GN owned the PCR after 1951. Books are being distributed by the four historical societies on the eastside of Lake Washington where the PCR operated, and will be available in the Online Store, www.GNRHS.org. Kurt will be making presentations on PCR his-



A family enjoys the trains running on the BEMRR's modular layout in the Archive's main work room during our Annual Open House over the 2018 Thanksgiving Weekend.

tory throughout the Puget Sound region followed by book signings.

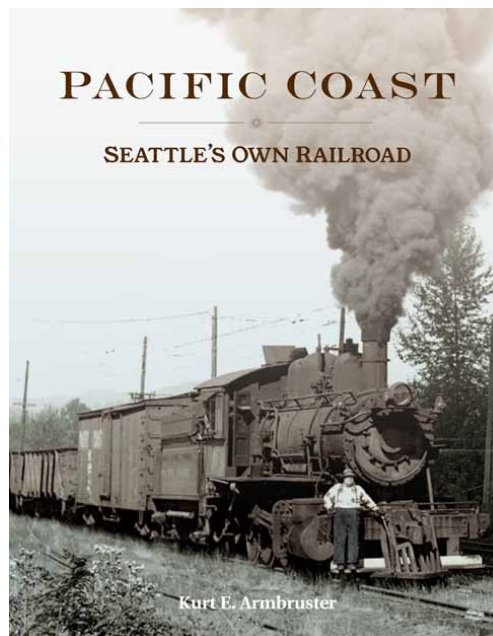
The NPRHA received many individual train sheets from the Rocky Mountain and Yellowstone Divisions on loan from by John Barrows, a former NP dispatcher in Livingston. The train sheets are being scanned before returning them, so they can be posted on the NP website.

The Walter Gordon collection is being sorted into the items that are relevant to PNRA's Pacific Northwest focus. A detailed resume of Mr. Gordon has been written to understand the extent of his involvement with *Milwaukee Road* electric operations in the northwest and other electric lines throughout the United States.

The *Seattle Municipal Street Railway* photo collection in the Ainsworth collection at PNRA is being cataloged by Mike Bergman in anticipation of posting them on the PNRArchive.org website.

The Archive received 90 boxes of Authorization for Expenditure (AFE) files from *Montana Rail Link* (MRL) in 2016. These files are from the NP's Rocky Mountain and Yellowstone Divisions and date from the early 1930s to the present. Cataloging is being completed by Randy Hammond using the database format used on the Tacoma Division AFEs currently on NPRHA.org. In September, we received nine large folders of Field Completion Reports covering many of the AFEs from MRL to significantly expand that collection.

Carol Dittbenner of Roy, Wash. has formed a city-wide committee to preserve the water tower in Roy and convert the area around the tower into a city park. The committee is seeking non-profit status and will apply for grants to create the park and use it to educate the citizens from the area

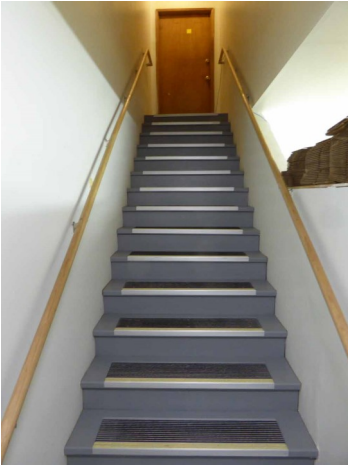


PACIFIC NORTHWEST RAILROAD ARCHIVE

about the railroad that ran through their city from 1873 to 1994. The NPRHA is providing the plans for the water tower and help with the non-profit status application.

Facilities

Work on PNRA's 2017-19 Heritage Capital Projects grant was completed by the end of December with the installation of the steel doors and the rebuild of the wall in Receiving, the painting of both of the Archive's stair wells and installation of the aluminum threads on the stairs. Also this quarter, our construction crew finished the Awnings on both the north and south Archive walls to route the water away from the building. In



New treads on the upper stairs.

addition, the contractor completed painting the building's south wall after the south awning was completed.

The six duct-less, heat-pump systems installed in the Archive this fall and funded by our 2017-19 Heritage Capital Project grant, are controlling the climate well in each of their individual areas. The additional good news is that we received the first Seattle City Light bill since the system went into operation and found that cost of electricity was less than the nature gas and electricity for the same period in 2017!!

Become a Friend of PNRA

Our members, *Friends of PNRA* support the Archive and our mission to preserve the history of our region's railroads and make it available on our internet web sites. Our members live throughout the United States, as well as in the Puget Sound area. There are two ways you can become a *Friend of PNRA*:

- **Joining a work crew** at one of regularly scheduled weekly sessions on Tuesdays, Wednesdays, Thursdays evenings or Saturdays. Email us to get started working on a collection that interests you at a time you are available.
- **Contributing funds** each year to help cover PNRA's operating costs. You can join the hundreds of contributors that regularly support PNRA online at www.PNRArchive.org, or mail a check to the address below and become a *Friend of PNRA*!!



Bill Petyrk & Rod Olson apply plywood sheathing to the frames of the north awning which will keep this side of the Archive dry.



The rebuilt wall around the new steel doors in Receiving which is under the south awning which routes water away from the building.

Administration

Each year starting in 2013 PNRA has been received funds from a 4Culture Sustaining grant. In October, we submitted an application to 4Culture for their 2019-20 Sustaining Grant program.

PNRA picks- packs-&-ships orders placed through the GNRHS and NPRHA's Online Stores. In October, the NPRHA received 750 models of the double-sheathed 40-foot box cars with five different paint schemes and a total of fourteen different road numbers. The first month we shipped 82 orders worth a total of \$9,860, the highest monthly sales since PNRA began shipping NPRHA orders.

To manage the high shipment levels, our Fulfillment Crew started printing the required postage on the shipping labels for each order from the two Online Stores. This means that the packages can be dropped off at the Post Office, instead of standing in line for postage.

Mac McCulloch is the new manager of the GNRHS Online Store. PNRA volunteer, Chris Haaland is now shipping the online orders for the NPRHA and GNRHS Stores each week from the Archive.

For the NPRHA 2018 convention, Jack Christensen painted three watercolors showing NP scenes in the Chehalis-Centralia area to be offered to the attendees as a fund-raiser for PNRA. The Association conducted a silent auction for Jack's paintings and PNRA received a total of \$2,375 from the auction. Jack is a regular member of our Wednesday work crew.

Gary Tarbox,
PNRA Executive Director
2018-Quarter 4 *Northwest News*

